

# Kansas Bioscience Park

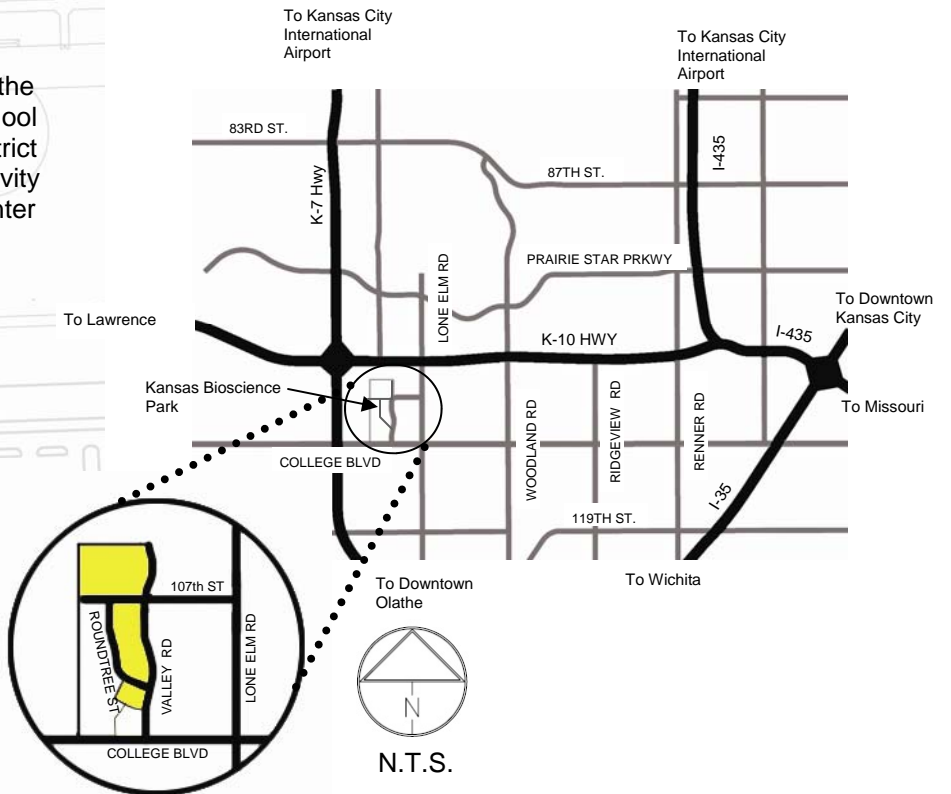
## Olathe, Kansas

### SITE SUMMARY

LOT 3:	BUILDING E	25,000 SF
	BUILDING I	24,000 SF
	BUILDING J	24,000 SF
	BUILDING M	26,800 SF
	<b>TOTAL</b>	<b>99,800 SF</b>
LOT 4:	BUILDING N	36,000 SF
	BUILDING O	35,250 SF
	BUILDING P	43,250 SF
	BUILDING Q	47,000 SF
	BUILDING R	47,000 SF
	BUILDING S	36,000 SF
	BUILDING T	36,000 SF
	BUILDING U	55,000 SF
	BUILDING V	55,000 SF
		<b>TOTAL</b>

#### Notes:

1. The Venture Accelerator and the National Institute for Animal Health and Food Safety are under construction. All other buildings shown are conceptual.
2. Land Costs: Free to qualifying companies.
3. Some development costs have been levied on the property.
4. Tax abatements are available to qualifying companies.



### Contact Information



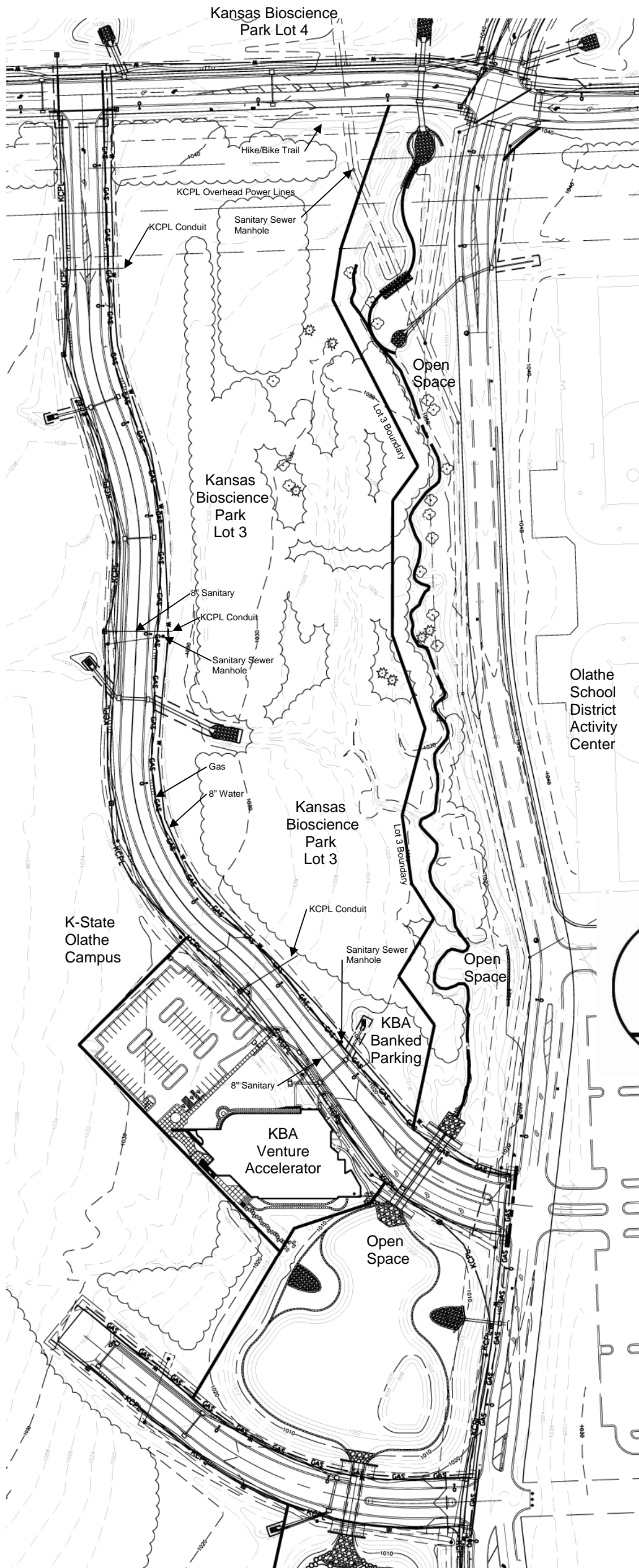
Gary Micheel, P.E.  
 Facilities Project Manager  
 Kansas Bioscience Authority  
 25501 W. Valley Parkway, Suite 100  
 Olathe, Kansas 66061  
 Ph.: 913.397.8300

### Map Prepared By:

Schlagel & Associates, P.A.  
 Ph.: 913.492.5158

# Kansas Bioscience Park Lot 3

Olathe, Kansas



## Site Information

10.95 Acres  
 BP-1 Zoning  
 Utilities Available  
 Adjacent to Public Trail System

## Utility Company Information

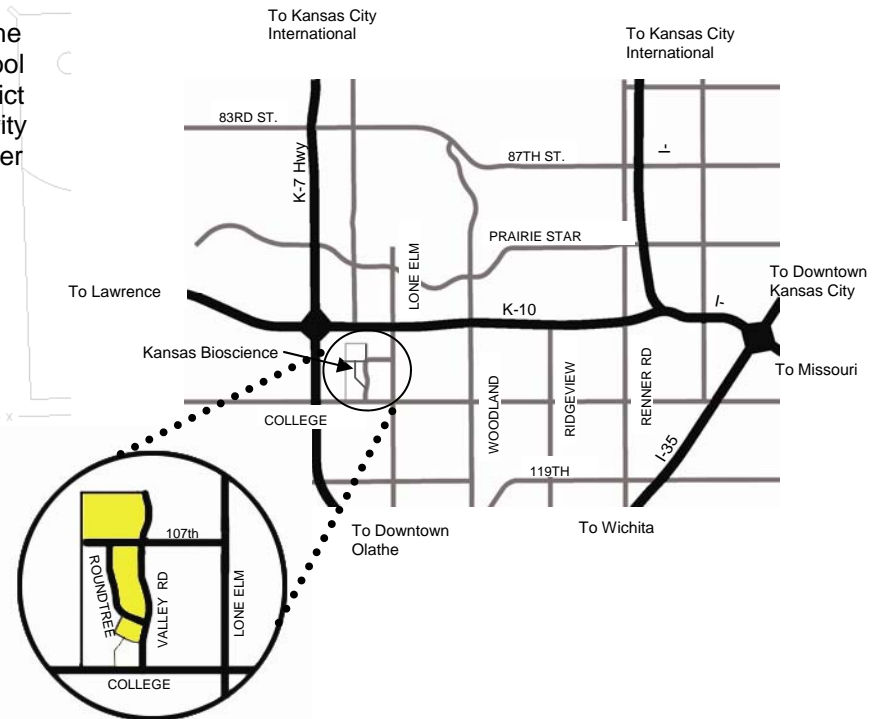
**Kansas City Power & Light**  
 8730 Nieman Road  
 Overland Park, KS 66214  
 (913) 681-7314

**WaterOne of Johnson County**  
 10747 Renner Blvd.  
 Lenexa, KS 66219-9624  
 (913) 895-5500

**ATMOS Energy**  
 25090 W. 110<sup>th</sup> Terrace  
 Olathe, KS 66061  
 (913) 254-6328

**City of Olathe Utility Department  
 Sanitary Sewers**  
 1385 S. Robinson  
 Olathe, KS 66061  
 (913) 971-9245

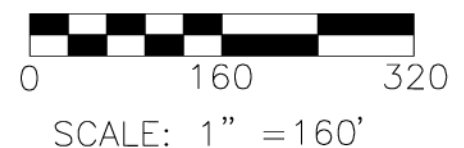
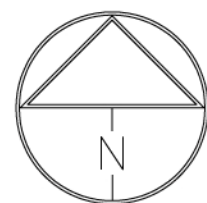
**AT&T**  
 9444 Nall Avenue  
 Overland Park, KS 66207  
 (913) 383-4934



## Contact Information



Gary Micheel, P.E.  
 Facilities Project Manager  
 Kansas Bioscience Authority  
 25501 W. Valley Parkway, Suite 100  
 Olathe, Kansas 66061  
 Ph.: 913.397.8300

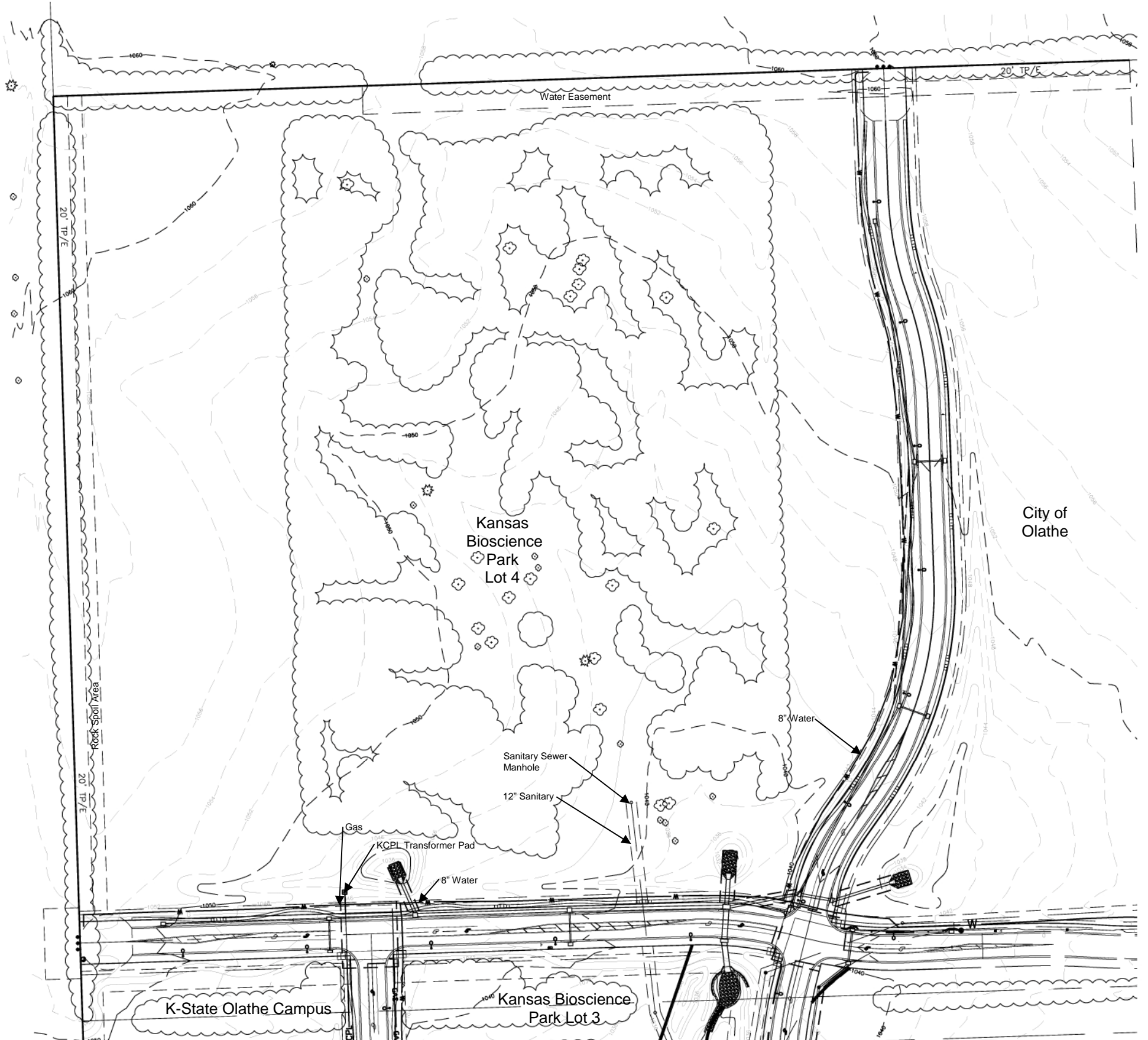


## Map Prepared By:

Schlagel & Associates, P.A.  
 913.492.5158

# Kansas Bioscience Park Lot 4

Olathe, Kansas



## Utility Company Information

### Kansas City Power & Light

8730 Nieman Road  
Overland Park, KS 66214  
(913) 681-7314

### WaterOne of Johnson County

10747 Renner Blvd.  
Lenexa, KS 66219-9624  
(913) 895-5500

### ATMOS Energy

25090 W. 110<sup>th</sup> Terrace  
Olathe, KS 66061  
(913) 254-6328

### City of Olathe Utility Department

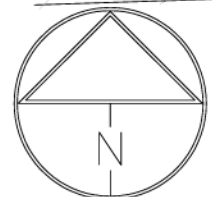
**Sanitary Sewers**  
1385 S. Robinson  
Olathe, KS 66061  
(913) 971-9245

### AT&T

9444 Nall Avenue  
Overland Park, KS 66207  
(913) 383-4934

## Site Information

30.78 Acres  
BP-1 Zoning  
Utilities Available  
Adjacent to Public Trail System

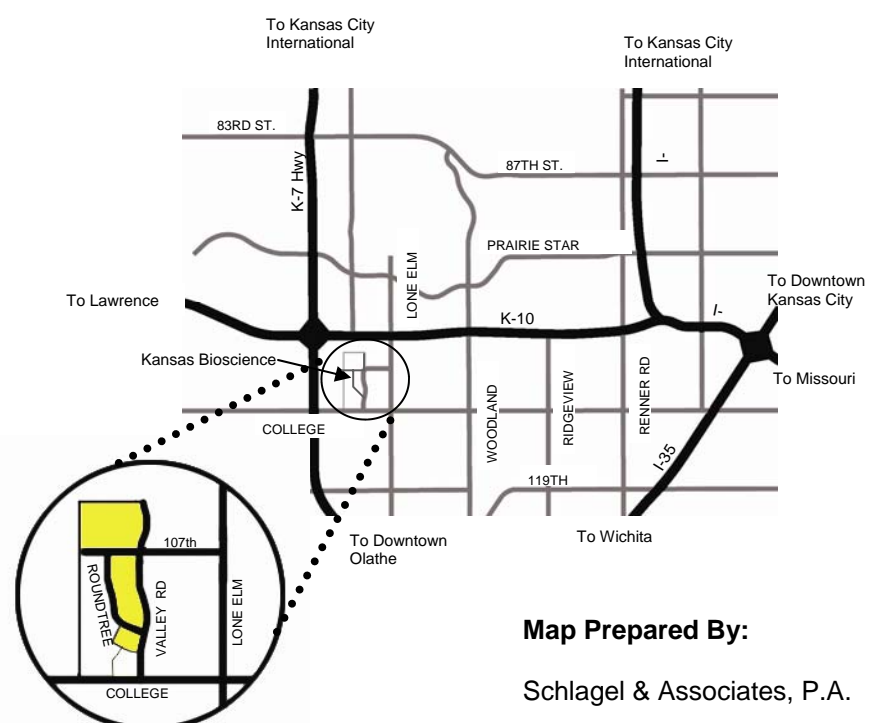


SCALE: 1" = 160'

## Contact Information



Gary Micheel, P.E.  
Facilities Project Manager  
Kansas Bioscience Authority  
25501 W. Valley Parkway, Suite 100  
Olathe, Kansas 66061  
Ph.: 913.397.8300



Map Prepared By:

Schlagel & Associates, P.A.